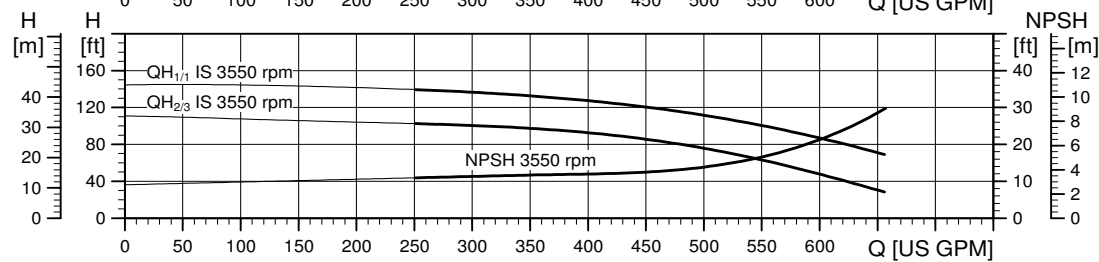
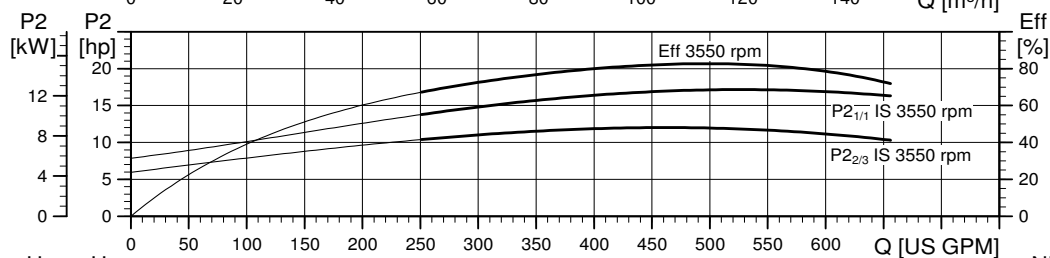
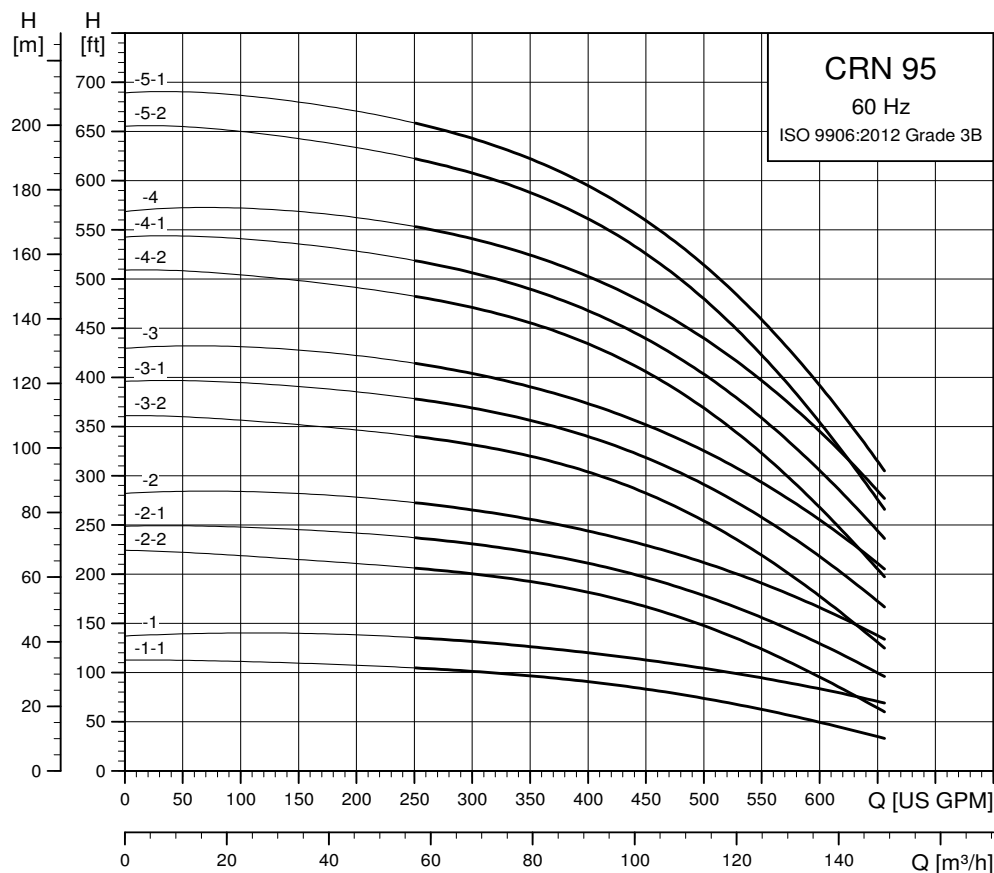
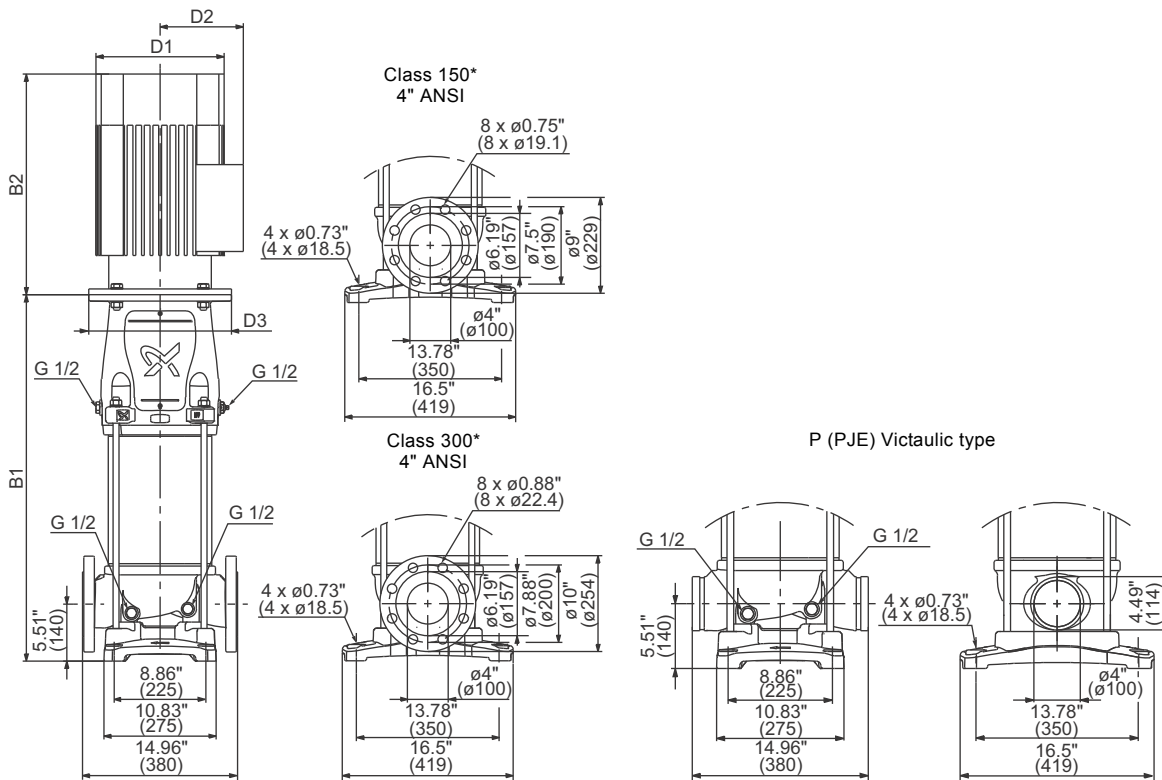


CRN 95



The maximum pump efficiency (Eta) is based on a three-stage pump.

TM06 5538 3718



TM06 6060 0319

\* CR, CRN 95 pumps with 1 to 4 stages (with 1 reduced diameter impeller) are fitted with 150 lb. (68 kg) flanges as standard. 300 lb. (136 kg) flanges are available on request.  
CR, CRN 95 pumps with 4 or more full diameter impellers are fitted with 300 lb. (136 kg) flanges as standard.

**Dimensions and weights**

Pump type	Motor P <sub>2</sub> [Hp (kW)]	Dimension [inch (mm)]					Net weight [lbs (kg)]
		B1	B1+B2	D1	D2	D3	
CRN 95-1-1	15 (11)	27.4 (696)	46.2 (1174)	12.4 (314)	8 (204)	8.5 (216)	412 (187)
CRN 95-1	20 (15)	27.4 (696)	46.2 (1174)	12.4 (314)	8 (204)	8.5 (216)	412 (187)
CRN 95-2-2	25 (18)	31.5 (800)	54.3 (1378)	12.4 (314)	8 (204)	10.5 (267)	452 (205)
CRN 95-2-1	30 (22)	31.5 (800)	54.3 (1378)	12.4 (314)	8 (204)	10.5 (267)	478 (217)
CRN 95-2	30 (22)	31.5 (800)	54.3 (1378)	12.4 (314)	8 (204)	10.5 (267)	478 (217)
CRN 95-3-2	40 (30)	36.4 (925)	64 (1625)	16.9 (429)	14.1 (359)	12.5 (318)	739 (335)
CRN 95-3-1	50 (37)	36.4 (925)	64 (1625)	16.9 (429)	14.1 (359)	12.5 (318)	807 (366)
CRN 95-3	50 (37)	36.4 (925)	64 (1625)	16.9 (429)	14.1 (359)	12.5 (318)	807 (366)
CRN 95-4-2	60 (45)	40.5 (1029)	67.6 (1716)	16.9 (429)	14.1 (359)	12.5 (318)	871 (395)
CRN 95-4-1	60 (45)	40.5 (1029)	67.6 (1716)	16.9 (429)	14.1 (359)	12.5 (318)	871 (395)
CRN 95-4	75 (56)	40.5 (1029)	68.1 (1729)	19.7 (500)	18.1 (460)	12.5 (318)	1190 (540)
CRN 95-5-2	75 (56)	44.6 (1134)	72.2 (1834)	19.7 (500)	18.1 (460)	12.5 (318)	1204 (546)
CRN 95-5-1	75 (56)	44.6 (1134)	72.2 (1834)	19.7 (500)	18.1 (460)	12.5 (318)	1204 (546)