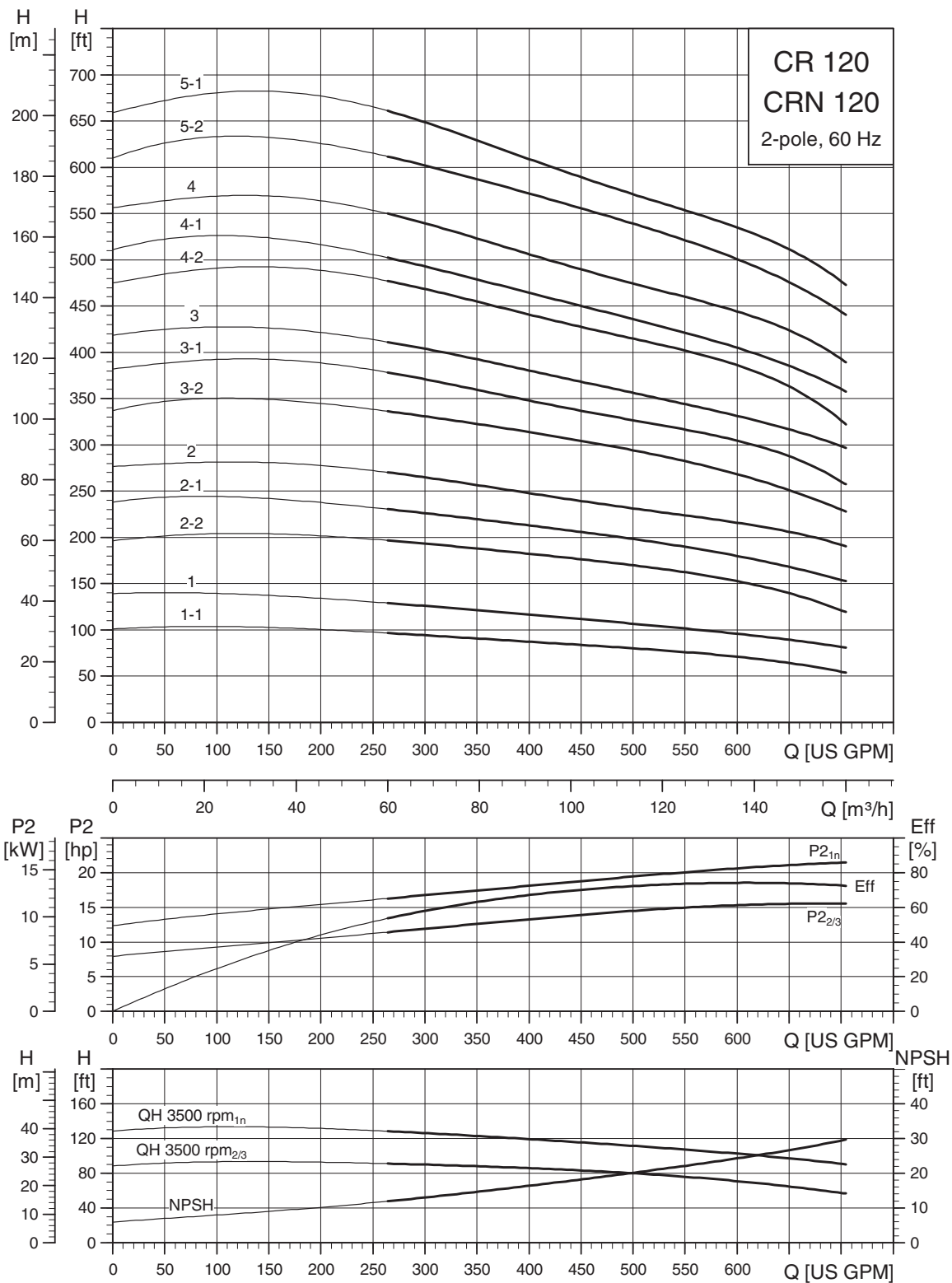
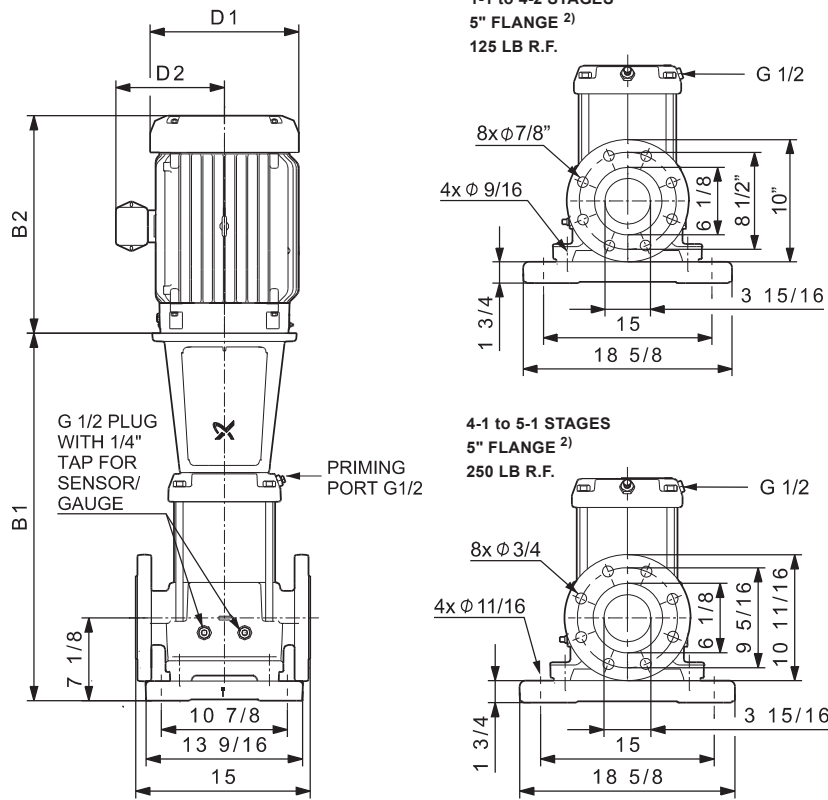


CR, CRN 120



TM03 9192 0209



TM04 9630 4810

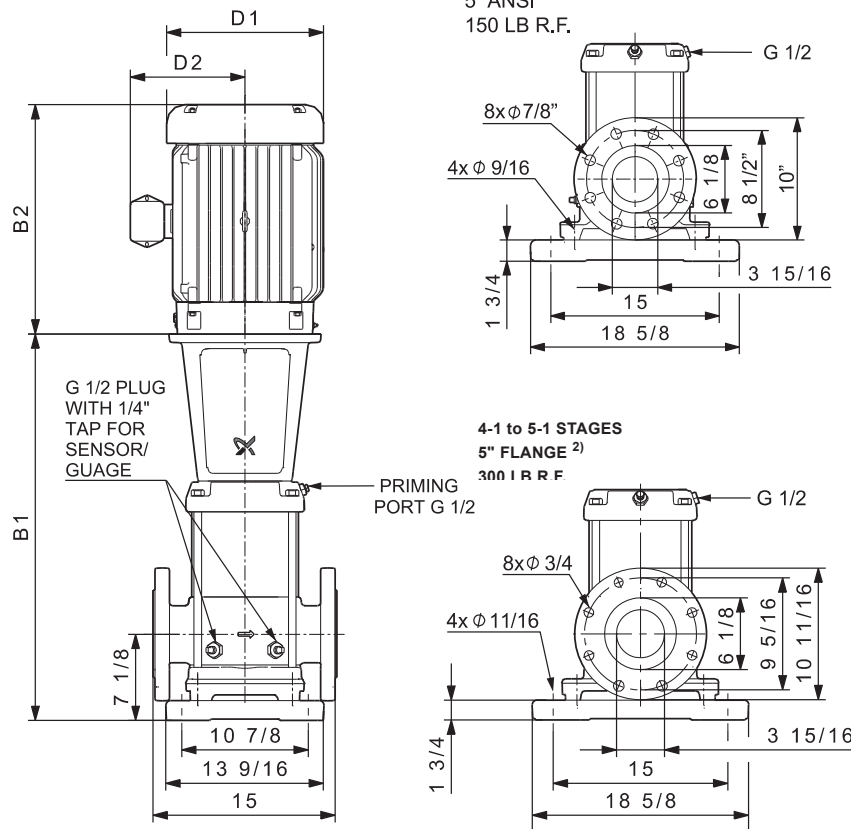
Pump type	P2 [hp]	Ph.	Dimensions [inch]									Dimensions [inch]				Ship Wt. [lbs.]
			B1	TEFC			ODP			MLE			Ship Wt. [lbs.]			
				D1	D2	B1+B2	D1	D2	B1+B2	D1	D2	B1+B2				
CR(E) 120-1-1	20	3	32.83	10.22	8.67	49.41	11.50	8.92	52.52	427	13.39	12.13	51.61	534		
CR(E) 120-1	25	3	32.83	12.94	11.52	52.65	11.50	8.94	53.64	507	13.39	12.13	55.55	561		
CR 120-2-2	40	3	38.98	15.32	13.11	62.17	13.25	12.21	62.23	704	-	-	-	-		
CR 120-2-1	40	3	38.98	15.32	13.11	62.17	13.25	12.21	62.23	704	-	-	-	-		
CR 120-2	50	3	38.98	16.88	14.12	66.79	13.25	12.21	61.73	735	-	-	-	-		
CR 120-3-2	60	3	45.08	19.00	14.90	75.87	15.12	13.19	71.21	936	-	-	-	-		
CR 120-3-1	60	3	45.08	19.00	14.90	75.87	15.12	13.19	71.21	936	-	-	-	-		
CR 120-3	75	3	45.08	19.00	14.90	75.87	15.18	13.19	71.21	1045	-	-	-	-		
CR 120-4-2	75	3	51.69	19.00	14.90	82.48	15.18	13.19	77.82	1199	-	-	-	-		
CR 120-4-1	100	3	51.69	19.00	17.38	82.51	15.12	13.19	79.07	1468	-	-	-	-		
CR 120-4	100	3	51.69	19.00	17.38	82.51	15.12	13.19	79.07	1468	-	-	-	-		
CR 120-5-2	100	3	57.80	19.00	17.38	88.62	15.12	13.19	85.18	1490	-	-	-	-		
CR 120-5-1	125	3	57.80	-	-	-	16.81	16.39	88.77	1191	-	-	-	-		

¹⁾ Weights are based on pump with TEFC motor (see price list for individual weights).

²⁾ CR 5" flange is not manufactured to ANSI specification. Gasket contact surface is approximately 0.25". CR 6" ANSI flange adapter is manufactured to ANSI B16.5 specification.

³⁾ CR 120-5-1, 125Hp ODP motor only.

All dimensions in inches unless otherwise noted.



TM04 9631 4810

Pump type	P2 [hp]	Ph.	Dimensions [inch]									Dimensions [inch]			
			B1	TEFC			ODP			Ship Wt. [lbs.]	MLE			Ship Wt. [lbs.]	
				D1	D2	B1+B2	D1	D2	B1+B2		D1	D2	B1+B2		
CRN(E) 120-1-1	20	3	32.83	10.22	8.67	49.41	11.50	8.92	52.52	434	13.39	12.13	51.61	541	
CRN(E) 120-1	25	3	32.83	12.94	11.52	52.65	11.50	8.94	53.64	514	13.39	12.13	55.55	568	
CRN 120-2-2	40	3	38.98	15.32	13.11	62.17	13.25	12.21	62.23	711	-	-	-	-	
CRN 120-2-1	40	3	38.98	15.32	13.11	62.17	13.25	12.21	62.23	711	-	-	-	-	
CRN 120-2	50	3	38.98	16.88	14.12	66.79	13.25	12.21	61.73	742	-	-	-	-	
CRN 120-3-2	60	3	45.08	19.00	14.90	75.87	15.12	13.19	71.21	943	-	-	-	-	
CRN 120-3-1	60	3	45.08	19.00	14.90	75.87	15.12	13.19	71.21	943	-	-	-	-	
CRN 120-3	75	3	45.08	19.00	14.90	75.87	15.18	13.19	71.21	1052	-	-	-	-	
CRN 120-4-2	75	3	51.69	19.00	14.90	82.48	15.18	13.19	77.82	1206	-	-	-	-	
CRN 120-4-1	100	3	51.69	19.00	17.38	82.51	15.12	13.19	79.07	1475	-	-	-	-	
CRN 120-4	100	3	51.69	19.00	17.38	82.51	15.12	13.19	79.07	1475	-	-	-	-	
CRN 120-5-2	100	3	57.80	19.00	17.38	88.62	15.12	13.19	85.18	1497	-	-	-	-	
CRN 120-5-1	125	3	57.80	-	-	-	16.81	16.39	88.77	1200	-	-	-	-	

1) Weights are based on pump with TEFC motor (see price list for individual weights).

2) CR 5" flange is not manufactured to ANSI specification. Gasket contact surface is approximately 0.25". CR 6" ANSI flange adapter is manufactured to ANSI B16.5 specification.

3) CRN 120-5-1, 125HP ODP motor only.

All dimensions in inches unless otherwise noted.