

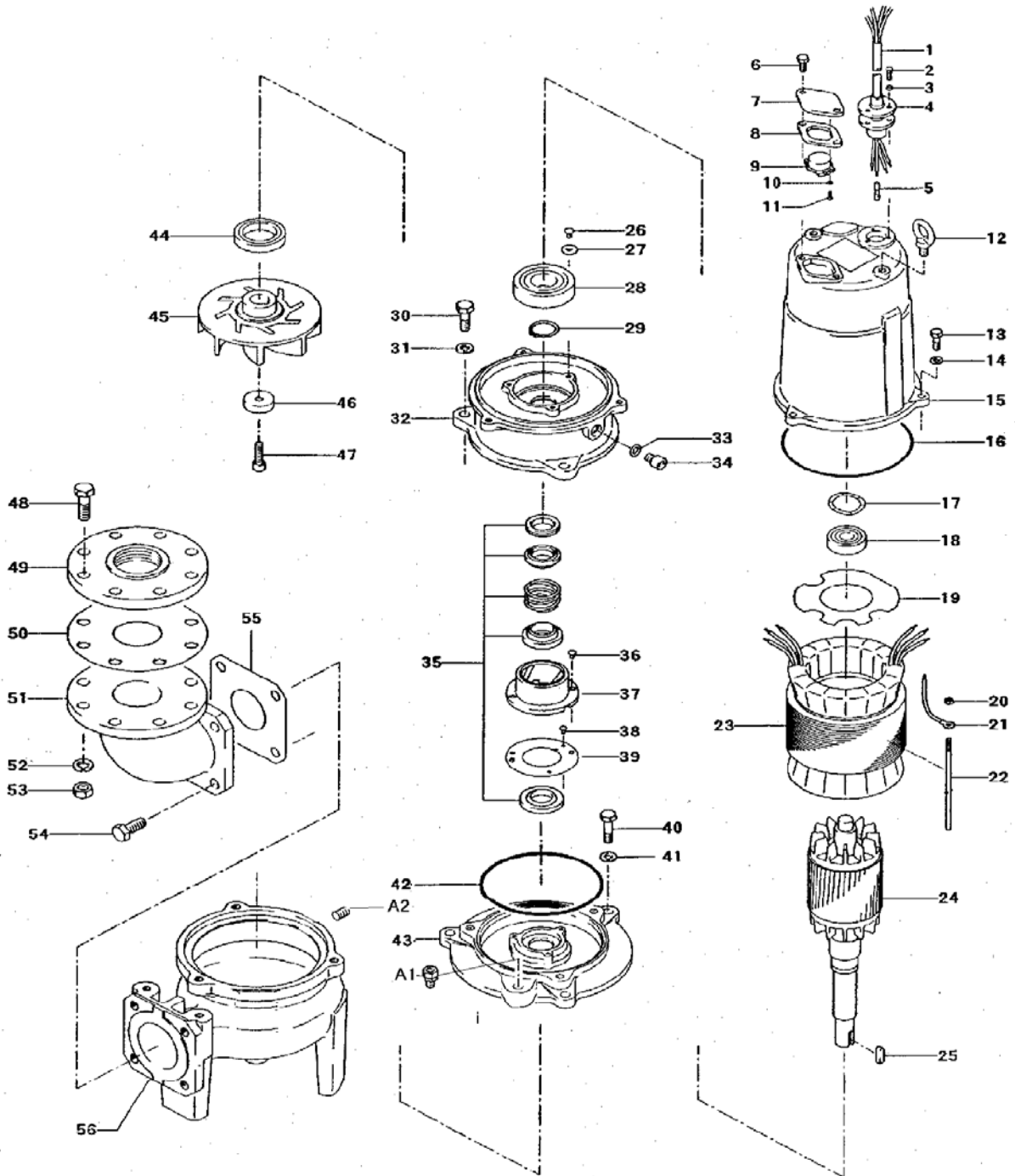
PARTS LIST		SEWAGE & WASTEWATER PUMP			4/9/2018	
ITEM	PART No.	DESCRIPTION	QTY	SIZE	MATERIAL	NOTES
1	001-150-25	Cabtyre Cable Set (32') 60Hz (USA)	1	VCT4Cx3.5mm2	BE/CE	
2	140-021-17	Hex.Bolt	3	M5x20	SUS304	
3	142-422-18	Seal Washer	3	PM-5	SUS+NBR	
4	003-111-20	Gland	1		SUS304	
5	009-275-18	Compression type Terminal 60Hz(USA)	4	TGNB-5.5(Insulated)	CU	
6	140-052-17	Hex.Bolt	2	M8x16	SUS304	
7	127-107-17	Protector Fixing Plate	1	22/37-BE2	SUS304	replaces OLD part# 127-195-12
8	121-446-13	Packing	1	22/37-BE2	NBR	*
9	053-241-25	Motor Protector 208/230V-60Hz(USA)	1	KA313-GGXL110	(T.C)	
	053-422-19	Motor Protector 460V-60Hz(USA)	1	KA313-GBXL103	(T.C)	
10	142-111-24	Plain Washer	2	M4(D=8)	SPC	
11	143-015-17	Pan Screw	2	M4x10	SWRM	
12	072-100-20	Eye Bolt	2	M10	SUS304	
13	140-055-10	Hex.Bolt	3	M8x25	SUS304	
14	142-163-18	Spring Washer	3	M8	SUS304	
15	064-509-15	Motor Frame	1		FC	
16	122-333-19	O-Ring	1	170xd3.1	NBR	*
17	142-196-10	Wave Washer	1	6205/6304	SK5	
18	052-188-17	Bearing (w/O-ring)	1	AC-6304ZZC3		
19	058-000-46	Lead Wire Protection Plate	1	d70xd140x1.6t	Bakelite	replaces OLD part# 058-117-13
20	141-004-59	Hex.Nut	1	M6	SWRM	
21	009-159-15	Terminal	1	R-2-6	CU	
22	129-003-18	Stopper	1	M6x160(11/20)	SS	
23		Stator	1Set			
24	055-791-18	Rotor	1Set			
25	147-066-15	Impeller Key	1	10x8x22l	SUS420	
26	143-042-13	Pan Screw	3	M6x10	SWRM	
27	062-196-19	Bearing Fixing Washer	3	d8xd20.5x2.3t	SS	
28	052-112-10	Bearing	1	6309ZZC3		
29	146-027-11	Retaining Ring	1	C45	SK5	
30	140-098-15	Hex.Bolt	3	M12x35	SUS304	
31	142-165-10	Spring Washer	3	M12	SUS304	
32	060-375-18	Bearing Housing	1		FC	
33	121-247-12	Packing	1	d12.3xd18x2t	PE	*
34	035-113-18	Oil Plug	1	M12x14	SUS304	
35	025-195-13	Mechanical Seal	1	H-35	SiC-SiC	can substitute 025-280-16 (H-35A)
36	143-070-23	Pan Screw	2	M5x6	SWRM	
37	030-156-18	Oil Lifter	1	H-35(A)(T)	Resin	

PARTS LIST		SEWAGE & WASTEWATER PUMP				4/9/2018
ITEM	PART No.	DESCRIPTION	QTY	SIZE	MATERIAL	NOTES
38	143-070-10	Pan Screw	3	M5x6	SWRM	
39	030-150-12	Seal Stopper	1	H-35(A)(T)	SPCC	
40	140-098-15	Hex.Bolt	3	M12x35	SUS304	
41	142-165-10	Spring Washer	3	M12	SUS304	
42	122-246-14	O-Ring	1	180xd3.1	NBR	*
43	029-387-16	Oil Casing	1	US43.7	FC	
A1	046-000-03	Air Release Valve	1	PT-1/2	SUS304	
44	026-143-19	Oil Seal	1	TC-507212	NBR	
45	021P4215	Impeller (60Hz)	1	80UZ43.7-61	FC	
46	142-366-13	Impeller Washer	1	d20xd40x16l	SUS304	
47	140-300-13	Hex.Socket Cap Bolt	1	M12x25	SUS304	
48	140-130-36	Hex.Bolt	8	M16x70	SWRM	included in BEND80x80 kit (specify ANSI or NPT)
49	048-000-54	Screwed Flange	1	NPT-3(JIS10K)	FC	included in BEND80x80 kit (specify ANSI or NPT)
50	121-105-33	Packing	1	JIS10Kx80mm	NR	included in BEND80x80 kit (specify ANSI or NPT)
51	037-169-15	Discharge Bend	1	80x80mm	FC	included in BEND80x80 kit (specify ANSI or NPT)
52	142-166-37	Spring Washer	8	M16	SWRH	included in BEND80x80 kit (specify ANSI or NPT)
53	141-008-11	Hex.Nut	8	M16	SUS304	included in BEND80x80 kit (specify ANSI or NPT)
54	140-124-11	Hex.Bolt	4	M16x40	SUS304	included in BEND80x80 kit (specify ANSI or NPT)
55	121-152-19	Packing	1	145mm2(P.C.145)	NBR	* included in BEND80x80 kit (specify ANSI or NPT)
56	020B1325	Pump Casing	1	80US43.7	FC	
A2	204-045-18	Plug	1	PT-1/8	SUS304	
	173-444-12	Packing O-Ring Set	1Set	(Marked by *)		
8	121-446-13	Packing (Protector Fixing Plate)	1	22/37-BE2	NBR	*
16	122-333-19	O-Ring (M.Frame/Brg.Housing)	1	170xd3.1	NBR	*
33	121-247-12	Packing (Oil Plug)	1	d12.3xd18x2t	PE	*
40	122-246-14	O-Ring (Brg.Housing/O.Casing)	1	180xd3.1	NBR	*
55	121-152-19	Packing (Discharge Bend)	1	145mm2(P.C.145)	NBR	*
		Lubricant		Turbine Oil VG32 1,250ml		

PARTS LIST		SEWAGE & WASTEWATER PUMP			4/9/2018	
ITEM	PART No.	DESCRIPTION	QTY	SIZE	MATERIAL	NOTES

EXPLODED VIEW

80UZ43.7-51/61 (80US43.7-50/60)



C-00320-1