

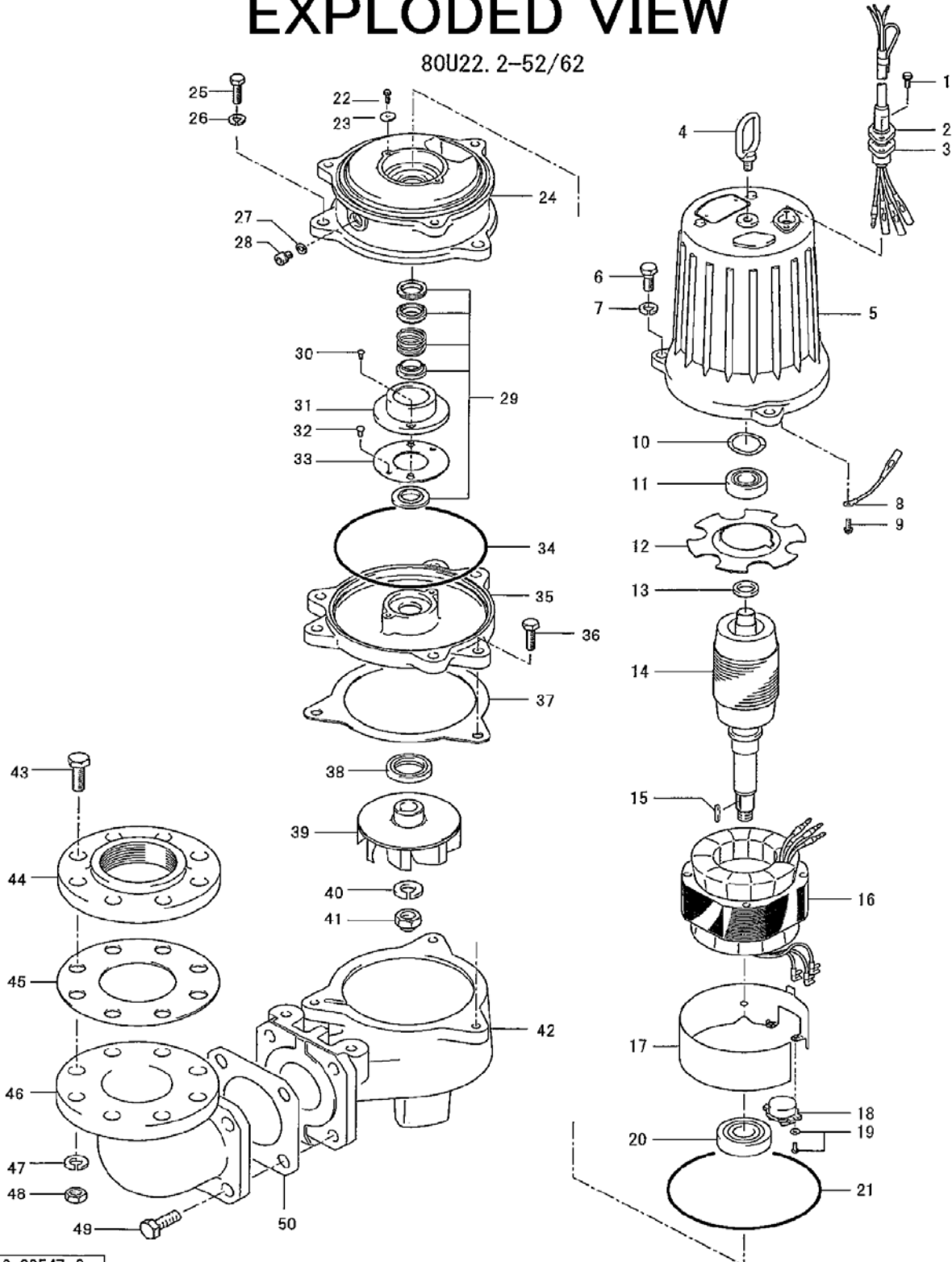
PARTS LIST		SEWER & WASTEWATER PUMPS			3/10/2017	
ITEM	PART No.	DESCRIPTION	QTY	SIZE	MATERIAL	NOTES
1	140-427-17	Hex.Bolt (w/Plain Washer)	2	M5x15	SUS304	
2	003-190-10	Gland	1		SUS316	
3	001-926-17	Cabtyre Cable Set (32') 60Hz(USA)	1	VCT4Cx2mm2	LBT	
4	072-000-03	Eye Bolt	1	M10	SUS304	
5	064-000-08	Motor Frame	1		FC	
6	140-076-17	Hex.Bolt	3	M10x30	SUS304	
7	142-164-19	Spring Washer	3	M10	SUS304	
8	009-211-16	Earth Terminal	1Set	1.25mm2x120L		
9	143-085-34	Pan Screw (w/Spring Washer)	1	M4x6	C3604	
10	142-389-12	Wave Washer	1	6204	SK5	
11	052-187-16	Bearing (w/O-ring)	1	AC-6204ZZC3		
12	058-000-13	Lead Wire Protection Plate	1	d61xd132x2t	Bakelite	
13	061-174-18	Slinger	1	d20xd27x2t	SPC	
14	055-000-02	Rotor	1Set			
15	147-128-16	Impeller Key	1	5x5x18.5l	SUS403	
16	056-001-18	Stator 220V-60Hz(USA)	1Set			
	056-001-19	Stator 440V-60Hz(USA)	1Set			
17	127-000-26	Protector Fixing Plate	1	KA313,d145	SPCC	
18	053-518-13	Motor Protector 220V-60Hz(USA)	1	KA313-GDXL103	(T.C)	
	053-477-19	Motor Protector 440V-60Hz(USA)	1	KA313-GQXL104	(T.C)	
19	143-126-12	Pan Screw (w/Spring Washer/Plain Washer)	2	M4x12	SWRM	
20	052-109-14	Bearing	1	6306ZZC3		
21	122-283-13	O-Ring	1	165xd3.1	NBR	*
22	140-000-23	Hex.Bolt (w/Spring Washer)	2	M5x10	SWRM	
23	062-187-17	Bearing Fixing Washer	2	d5.5xd18x2.3t	SPC	
24	060-000-13	Bearing Housing	1		FC	
25	140-098-15	Hex.Bolt	3	M12x35	SUS304	
26	142-165-10	Spring Washer	3	M12	SUS304	
27	121-247-12	Packing	1	d12.3xd18x2t	PE	*
28	035-113-18	Oil Plug	1	M12x14	SUS304	
29	025-193-11	Mechanical Seal	1	H-25	SIC	
30	143-070-23	Pan Screw	2	M5x6	SWRM	
31	030-143-12	Oil Lifter	1	H-25(A)(T)	Resin	
32	143-070-10	Pan Screw	2	M5x6	SWRM	
33	030-152-14	Seal Stopper	1	H-25(A)(T)	SPCC	
34	122-246-14	O-Ring	1	180xd3.1	NBR	*
35	029-266-18	Oil Casing	1	U-80-22/37	FC	
36	140-078-19	Hex.Bolt	3	M10x35	SUS304	

PARTS LIST		SEWER & WASTEWATER PUMPS			3/10/2017	
ITEM	PART No.	DESCRIPTION	QTY	SIZE	MATERIAL	NOTES
37	121-408-13	Packing	1	d153xd183x2t	NBR	*
38	026-109-13	Oil Seal	1	TC-355511	NBR	
39	021D9715	Impeller (60Hz)	1	80U22.2-62	FC	
40	142-166-11	Spring Washer	1	M16	SUS304	
41	141-033-15	Hex.Cap Nut	1	M16	SUS304	
42	020-793-12	Pump Casing	1	U-80-22	FC	
43	140-130-36	Hex.Bolt	8	M16x70	SWRM	included in BEND80x80 kit (specify ANSI or NPT)
44	048-000-54	Screwed Flange	1	NPT-3(JIS10K)	FC	included in BEND80x80 kit (specify ANSI or NPT)
45	121-105-33	Packing	1	JIS10Kx80mm	NR	included in BEND80x80 kit (specify ANSI or NPT)
46	037-169-15	Discharge Bend	1	80x80mm	FC	included in BEND80x80 kit (specify ANSI or NPT)
47	142-166-37	Spring Washer	8	M16	SWRH	included in BEND80x80 kit (specify ANSI or NPT)
48	141-008-11	Hex.Nut	8	M16	SUS304	included in BEND80x80 kit (specify ANSI or NPT)
49	140-124-11	Hex.Bolt	4	M16x40	SUS304	included in BEND80x80 kit (specify ANSI or NPT)
50	121-152-19	Packing	1	145mm2(P.C.145)	NBR	* included in BEND80x80 kit (specify ANSI or NPT)
	173-000-62	Packing O-Ring Set	1Set	(Marked by *)		
21	122-283-13	O-Ring (M.Frame/Brg.Housing)	1	165xd3.1	NBR	*
27	121-247-12	Packing (Oil Plug)	1	d12.3xd18x2t	PE	*
34	122-246-14	O-Ring (Brg.Housing/O.Casing)	1	180xd3.1	NBR	*
37	121-408-13	Packing (O.Casing/P.Casing)	1	d153xd183x2t	NBR	*
50	121-152-19	Packing (Discharge Bend)	1	145mm2(P.C.145)	NBR	*
		Lubricant		Turbine Oil VG32 1,200ml		

PARTS LIST		SEWER & WASTEWATER PUMPS			3/10/2017	
ITEM	PART No.	DESCRIPTION	QTY	SIZE	MATERIAL	NOTES

EXPLODED VIEW

80U22.2-52/62



C-00547-2