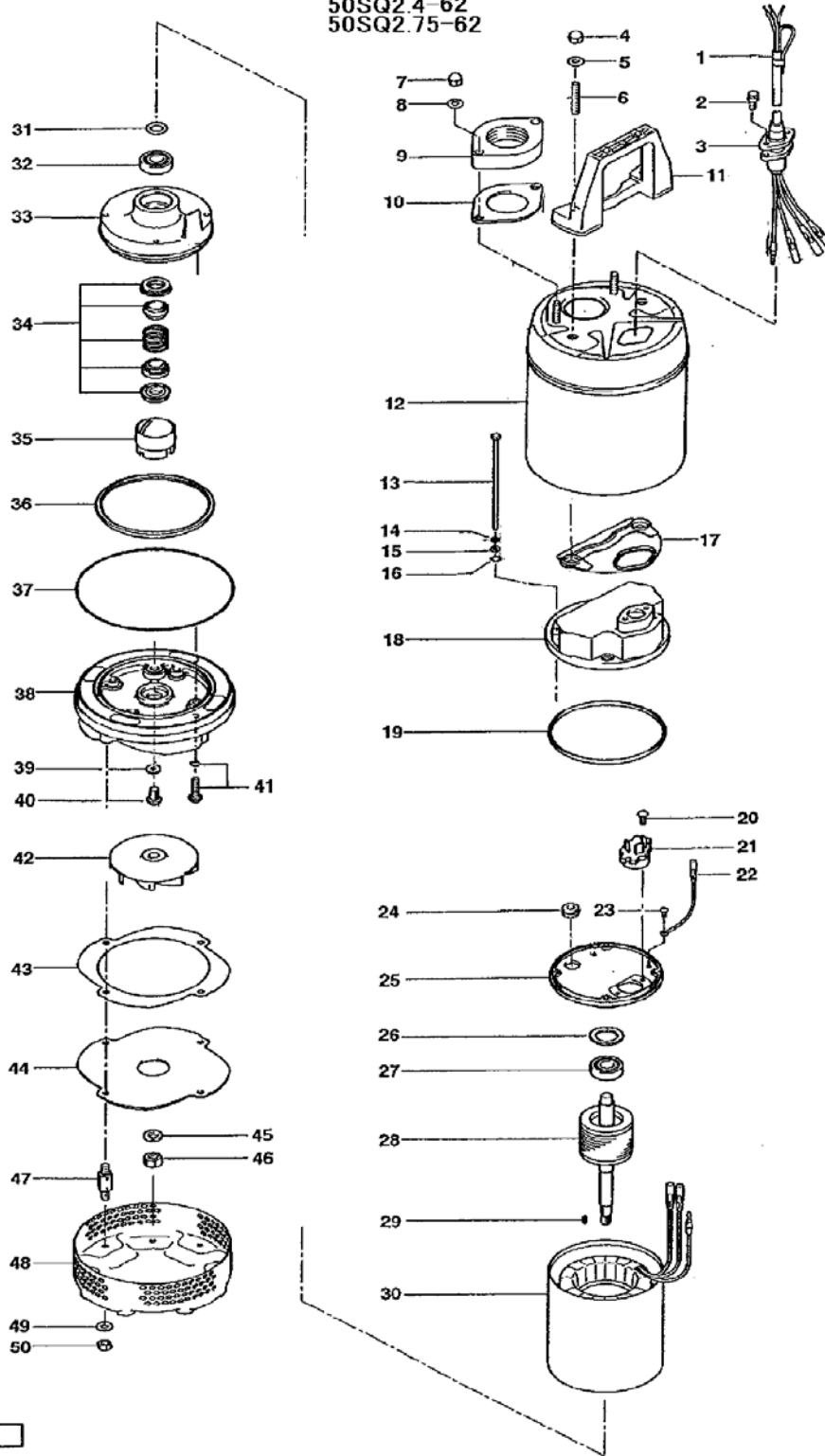


| PARTS LIST | | CORROSION RESISTANT PUMPS | | | 10/18/2013 | |
|------------|------------|---|------|--------------------|------------|-------|
| ITEM | PART No. | DESCRIPTION | QTY | SIZE | MATERIAL | NOTES |
| 1 | 001-803-20 | Cabtyre Cable Set (10m)208/220V-60Hz(USA) | 1 | VCT4Cx1.25mm2 | LBT | |
| | 001-803-20 | Cabtyre Cable Set (10m)460V-60Hz(USA) | 1 | VCT4Cx1.25mm2 | LBT | |
| 2 | 140-427-17 | Hex.Bolt (w/Plain Washer) | 2 | M5x15 | SUS304 | |
| 3 | 003-190-10 | Gland | 1 | | SUS316 | |
| 4 | 141-030-12 | Hex.Cap Nut | 2 | M8 | SUS304 | |
| 5 | 142-127-10 | Plain Washer | 2 | M8 | SUS304 | |
| 6 | 144-000-04 | Stud Bolt | 2 | M8x45L(Free End) | SUS304 | |
| 7 | 032-165-29 | Hose Coupling | 1 | 50mm | Resin | |
| 8 | 141-030-12 | Hex.Cap Nut | 2 | M8 | SUS304 | |
| 9 | 142-127-10 | Plain Washer | 2 | M8 | SUS304 | |
| 10 | 048-274-18 | Screwed Flange | 1 | NPT-2(P.C.90) | Resin | |
| 11 | 121-360-12 | Packing | 1 | SQ2-4/8 | NBR | |
| 12 | 068-000-01 | Handle | 1 | | Resin | |
| 13 | 065-000-13 | Outer Cover | 1 | | SUS304 | |
| 14 | 140-000-05 | Hex.Bolt | 4 | M5x159 | SUS304 | |
| 15 | 142-161-16 | Spring Washer | 4 | M5 | SUS304 | |
| 16 | 142-125-18 | Plain Washer | 4 | M5 | SUS304 | |
| 17 | 122-003-17 | O-Ring | 4 | P-5(4.8xd1.9) | NBR | |
| 18 | 121-000-12 | Packing | 1 | SQ(P.C.108) | NBR | |
| 19 | 051-000-01 | Head Cover | 1 | | SCS13 | |
| 20 | 121-000-13 | Packing | 1 | d126xd136x4.5t | NBR | |
| 21 | 143-126-12 | Pan Screw (w/Spring Washer/Plain Washer) | 2 | M4x12 | SWRM | |
| 22 | 053-292-18 | Motor Protector 208/220V-60Hz(USA) | 1 | KA311-DAZL78 | (T.C) | |
| | 053-000-43 | Motor Protector 460V-60Hz(USA) | 1 | KA311-DPVL63 | (T.C) | |
| 23 | 009-000-08 | Intermediate Lead Wire | 1Set | 1.25mm2x130L | | |
| 24 | 140-452-11 | Hex.Bolt (w/Spring/Plain Washer) | 1 | M4x8 | C3604 | |
| 25 | 016-000-01 | Lead Wire Protection Bush | 1 | d12xd20x9.5t | CR | |
| 26 | 050-000-01 | Motor Bracket | 1 | | ADC | |
| 27 | 142-388-11 | Wave Washer | 1 | 6201(D=30.6) | S65CM | |
| 28 | 052-100-15 | Bearing | 1 | 6201ZZC3 | | |
| 29 | 055-000-08 | Rotor | 1Set | w/Bearing | | |
| 30 | 147-016-10 | Impeller Key | 1 | 4x4x10L | SUS403 | |
| 31 | 056-000-13 | Stator(w/M.Frame) 208/220V-60Hz(USA) | 1Set | | | |
| | 056-001-02 | Stator(w/M.Frame) 460V-60Hz(USA) | 1Set | | | |
| 32 | 061-175-19 | Bearing Collar | 1 | d15xd23x1.6t | SPC | |
| 33 | 052-152-12 | Bearing | 1 | 6302ZZC3 | | |
| 34 | 060-000-02 | Bearing Housing | 1 | | ADC | |
| 35 | 025-290-19 | Mechanical Seal | 1 | W-14HL | SSIC | |
| 36 | 030-000-01 | Oil Lifter | 1 | VANCS2 | Resin | |
| 37 | 121-001-12 | Packing | 1 | VANCS2 | NBR | |
| 38 | 122-000-08 | O-Ring | 1 | 165xd2.7 | NBR | |
| 39 | 020-000-09 | Pump Casing | 1 | (40/50)SQ2.25/4/75 | SCS13 | |
| 40 | 121-246-11 | Packing | 1 | d10.3xd16x2t | PE | |
| 41 | 035-127-15 | Oil Plug | 1 | M10x15 | SUS304 | |

| PARTS LIST | | CORROSION RESISTANT PUMPS | | | 10/18/2013 | |
|------------|----------|---------------------------|-----|------|------------|-------|
| ITEM | PART No. | DESCRIPTION | QTY | SIZE | MATERIAL | NOTES |

EXPLODED VIEW

40SQ2.25-62
50SQ2.4-62
50SQ2.75-62



C-00511-1