

| PARTS LIST |            | VANCS WASTEWATER PUMP                  |      |                             | 2/20/2018 |       |
|------------|------------|--|------|-----------------------------|-----------|-------|
| ITEM       | PART No.   | DESCRIPTION                            | QTY  | SIZE                        | MATERIAL  | NOTES |
| 1          | 001-248-21 | Cabtyre Cable Set (32')115V-60Hz (USA) | 1    | VCT3Cx1.25mm2(C EE)         | LB        |       |
| 2          | 143-000-33 | Hex.Tapping Screw                      | 2    | M5x20                       | SUS304    |       |
| 3          | 003-190-10 | Gland                                  | 1    |                             | SUS316    |       |
| 4          | 051-000-46 | Head Cover                             | 1    |                             | Resin     |       |
| 5          | 140-000-07 | Hex.Bolt (w/Plain Washer)              | 4    | M6x30(22L)                  | SUS304    |       |
| 6          | 122-004-18 | O-Ring                                 | 4    | P-6(5.8xd1.9)               | NBR       | *     |
| 7          | 143-085-34 | Pan Screw (w/Spring Washer)            | 1    | M4x6                        | C3604     |       |
| 8          | 009-001-25 | Earth Terminal                         | 1Set | AWG16x170L                  |           |       |
| 9          | 076-000-01 | Capacitor 115V-60Hz(USA)               | 1    | 45MF-220VAC                 |           |       |
|            | 076-000-08 | Capacitor 230V-60Hz(USA)               | 1    | 12MF-440VAC                 |           |       |
| 10         | 143-000-04 | Pan Screw                              | 4    | M5x118(20L)                 | SWRM      |       |
| 11         | 050-000-02 | Motor Bracket                          | 1    |                             | ADC       |       |
| 12         | 121-001-46 | Packing                                | 1    | d125.7xd134.7x6t            | NBR       | *     |
| 13         | 056-007-91 | Stator(w/M.Frame) 115V-60Hz(USA)       | 1Set | w/Miniature Protector       |           |       |
|            | 056-007-93 | Stator(w/M.Frame) 230V-60Hz(USA)       | 1Set | w/Miniature Protector       |           |       |
| 14         | 071-000-01 | Collar                                 | 1    | 37L                         | SECC      |       |
| 15         | 142-000-91 | Wave Washer                            | 1    | 6201(D=30.6,t=0.35)         | SK5       |       |
| 16         | 052-100-15 | Bearing                                | 1    | 6201ZZC3                    |           |       |
| 17         | 055-002-90 | Rotor                                  | 1Set | w/Bearing                   |           |       |
| 18         | 061-157-15 | Bearing Collar                         | 1    | d15.1xd21x1.6t              | SPCC      |       |
| 19         | 052-101-16 | Bearing                                | 1    | 6202ZZC3                    |           |       |
| 20         | 060-001-36 | Bearing Housing                        | 1    |                             | ADC       |       |
| 21         | 025-290-19 | Mechanical Seal                        | 1    | W-14HL                      | SSiC      |       |
| 22         | 030-000-01 | Oil Lifter                             | 1    | VANCS2                      | Resin     |       |
| 23         | 121-001-12 | Packing                                | 1    | VANCS2                      | NBR       | *     |
| 24         | 035-127-15 | Oil Plug                               | 1    | M10x15                      | SUS304    |       |
| 25         | 121-246-11 | Packing                                | 1    | d10.3xd16x2t                | PE        | *     |
| 26         | 140-000-03 | Hex.Bolt (w/Spring Washer)             | 4    | M6x25                       | SUS304    |       |
| 27         | 029-000-95 | Oil Casing                             | 1    | VANCS2                      | Resin     |       |
| 28         | 143-000-26 | Truss Screw (w/O-Ring)                 | 4    | M6x20(P-5,NBR)              | SUS304    |       |
| 29         | 142-354-18 | Conical Spring Washer                  | 1    | d11.2xd22.5x0.8t            | SUS304    |       |
| 30         | 021G3026   | Impeller (60Hz)                        | 1    | 50PSF2.25S-63               | Resin     |       |
| 31         | 143-140-12 | Truss Screw (w/Plain Washer)           | 1    | M6x12                       | SUS304    |       |
| 32         | 122-000-07 | O-Ring                                 | 1    | 122xd3.0                    | NBR       | *     |
| 33         | 140-000-09 | Hex.Bolt (w/Spring Washer)             | 2    | M8x45                       | SUS304    |       |
| 34         | 048-274-18 | Screwed Flange                         | 1    | NPT-2(P.C.90)               | Resin     |       |
| 35         | 121-469-12 | Packing                                | 1    | P.C.90xd58x2t               | NR        | *     |
| 36         | 020-000-06 | Pump Casing                            | 1    | (40/50)PN/PSF2.25/.4/.75    | Resin     |       |
| 37         | 023-000-02 | Strainer                               | 1    | (40/50)PSF(A)(W)2.25/.4/.75 | Resin     |       |

\* Indicates items included in set



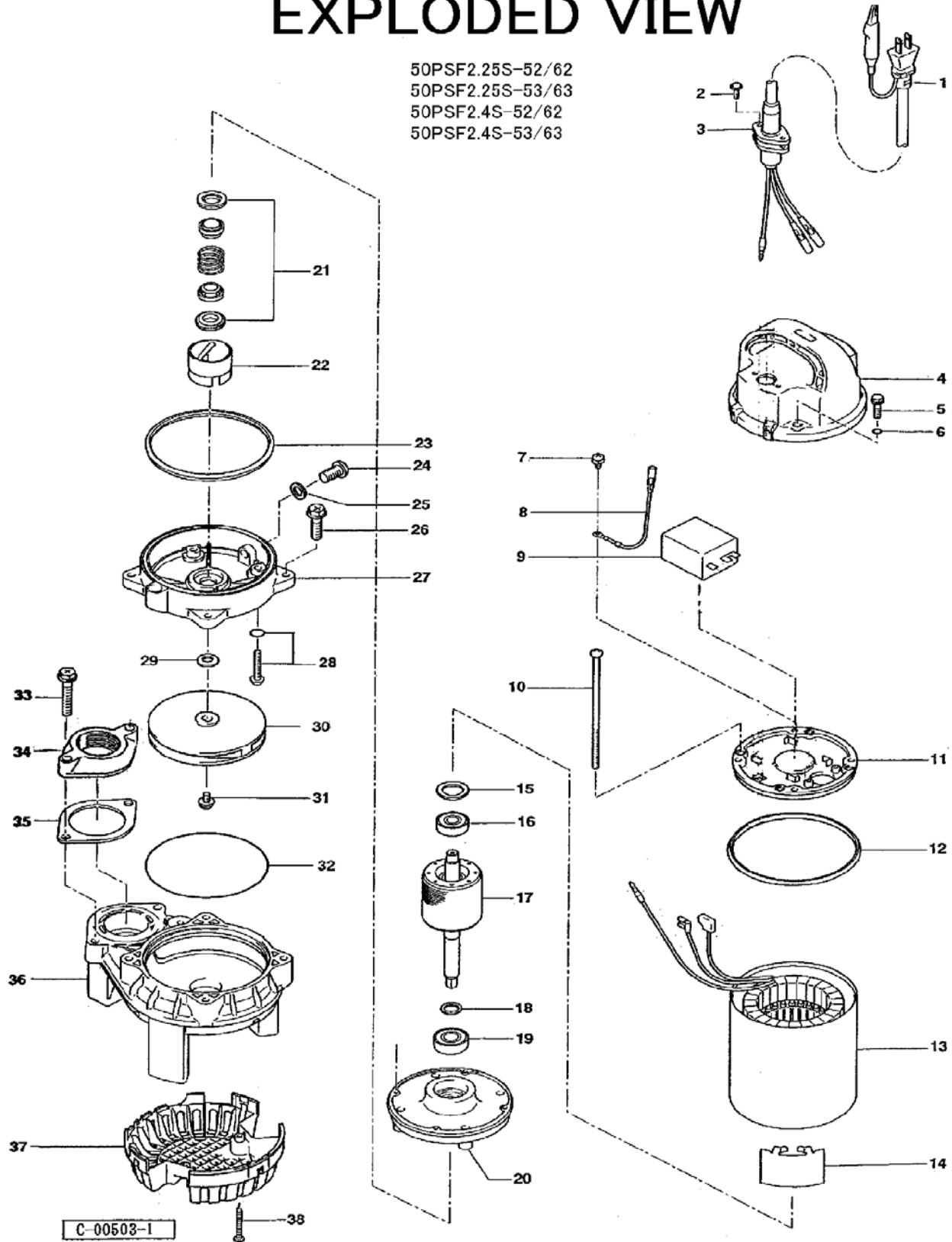
MODEL 50PSF2.25S-63

| PARTS LIST |            | VANCS WASTEWATER PUMP           |      |                               |          | 2/20/2018 |
|------------|------------|---------------------------------|------|-------------------------------|----------|-----------|
| ITEM       | PART No.   | DESCRIPTION                     | QTY  | SIZE                          | MATERIAL | NOTES     |
| 38         | 143-000-10 | Truss Tapping Screw             | 2    | M4x18                         | SUS304   |           |
|            | 173-003-14 | Packing O-Ring Set              | 1Set | (Marked by *)                 |          |           |
| 6          | 122-004-18 | O-Ring (Head Cover Fixing Bolt) | 4    | P-6(5.8xd1.9)                 | NBR      | *         |
| 12         | 121-001-46 | Packing (Head Cover/M.Frame)    | 1    | d125.7xd134.7x6t              | NBR      | *         |
| 23         | 121-001-12 | Packing (M.Frame/O.Casing)      | 1    | VANCS2                        | NBR      | *         |
| 25         | 121-246-11 | Packing (Oil Plug)              | 1    | d10.3xd16x2t                  | PE       | *         |
| 28         | 122-003-17 | O-Ring (P.Casing Fixing Screw)  | 4    | P-5(4.8xd1.9)                 | NBR      | *         |
| 32         | 122-000-07 | O-Ring (O.Casing/P.Casing)      | 1    | 122xd3.0                      | NBR      | *         |
| 35         | 121-469-12 | Packing (Screwed Flange)        | 1    | P.C.90xd58x2t                 | NR       | *         |
|            |            | Lubricant                       |      | Liquid Paraffin<br>VG32 240ml |          |           |

| PARTS LIST |          | VANCS WASTEWATER PUMP |     |      | 2/20/2018 |       |
|------------|----------|-----------------------|-----|------|-----------|-------|
| ITEM       | PART No. | DESCRIPTION           | QTY | SIZE | MATERIAL  | NOTES |

## EXPLODED VIEW

50PSF2.25S-52/62  
 50PSF2.25S-53/63  
 50PSF2.4S-52/62  
 50PSF2.4S-53/63



C-00503-1