

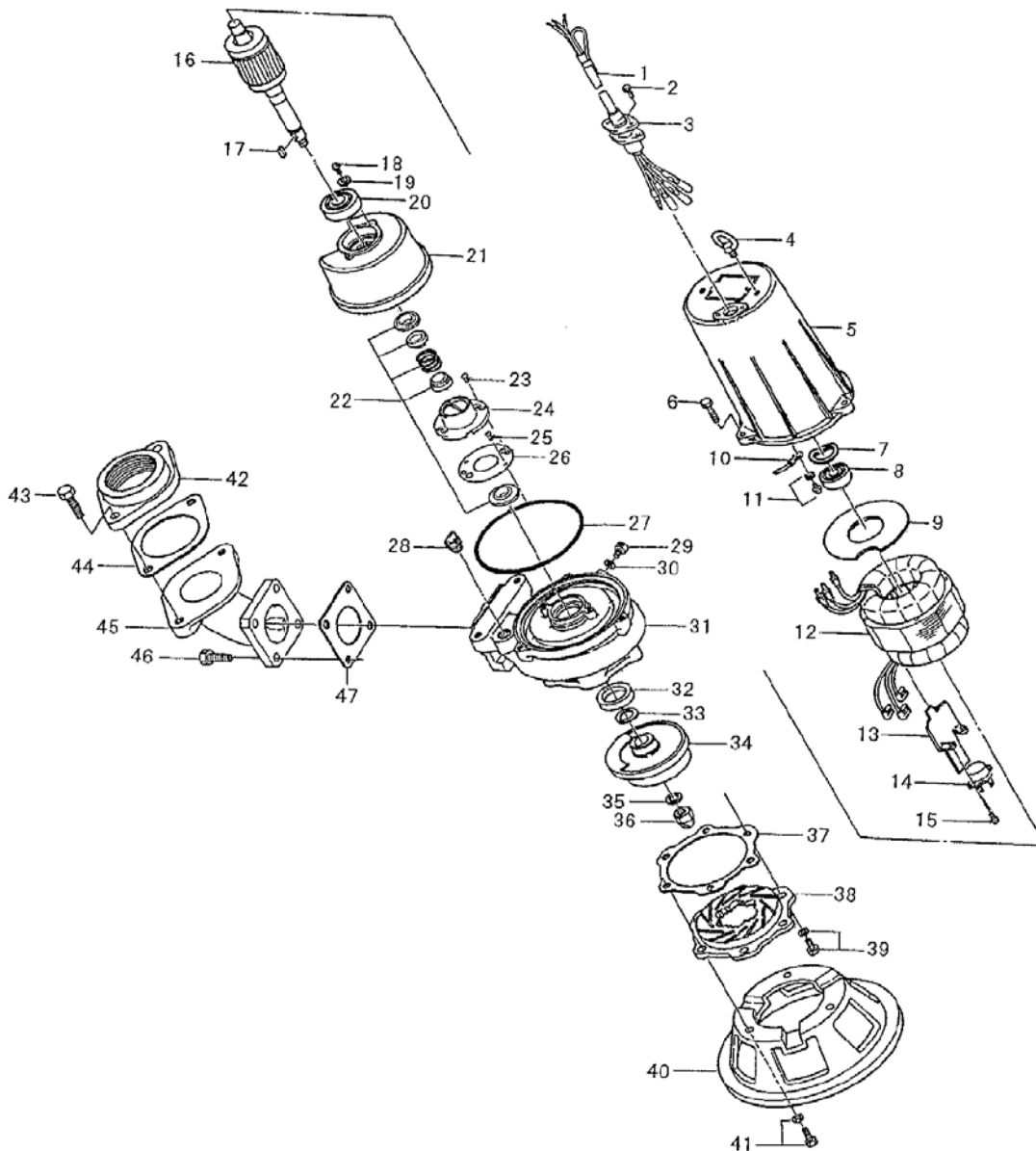
PARTS LIST		SEWER & WASTEWATER PUMP				9/6/2017
ITEM	PART No.	DESCRIPTION	QTY	SIZE	MATERIAL	NOTES
1	001-803-20	Cabtyre Cable Set (32') 60Hz(USA)	1	VCT4Cx1.25mm2	LBT	
2	140-427-17	Hex.Bolt (w/Plain Washer)	2	M5x15	SUS304	
3	003-190-10	Gland	1		SUS316	
4	072-105-25	Eye Bolt	2	M8	SUS304	
5	064-000-64	Motor Frame	1		FC	
6	140-056-11	Hex.Bolt	3	M8x30	SUS304	
7	142-194-18	Wave Washer		6203	SK5	
8	052-186-15	Bearing (w/O-ring)	1	AC-6203ZZC3		
9	058-000-34	Lead Wire Protection Plate	1	d52xd115x1.2t	GFRP	interchangeable with OLD part# 058-115-11 (Bakelite)
10	009-112-16	Earth Terminal	1Set	1.25mm2		
11	143-085-21	Pan Screw (w/Spring Washer)	1	M4x6	SWRM	
12	056-003-27	Stator 230V-60Hz(USA)	1Set			
	056-003-31	Stator 460V-60Hz(USA)	1Set			
	056-003-33	Stator 575V-60Hz(USA)	1Set			
13	127-000-32	Protector Fixing Plate	1	P.C.39.5x117L	SECC	
14	053-001-29	Motor Protector 230V-60Hz(USA)	1	KA311-DBXL55	(T.C)	
	053-465-14	Motor Protector 460V-60Hz(USA)	1	KA311-DPXL62C	(T.C)	
	053-444-17	Motor Protector 575V-60Hz(USA)	1	KA311-DPXL65	(T.C)	
15	143-126-38	Pan Screw (w/Spring Washer/Plain Washer)	2	M4x12	SWRM	
16	055-002-29	Rotor	1Set	w/Bearing		
17	147-000-26	Impeller Key	1	5x5x15.5L	SUS304	
18	140-000-23	Hex.Bolt (w/Spring Washer)	2	M5x10	SWRM	
19	062-187-17	Bearing Fixing Washer	2	d5.5xd18x2.3t	SPC	
20	052-107-12	Bearing	1	6304ZZC3		
21	060-000-64	Bearing Housing	1		FC	
22	025-192-10	Mechanical Seal	1	H-20	SiC	
23	143-070-23	Pan Screw	2	M5x6	SWRM	
24	030-144-13	Oil Lifter	1	H-20(A)(T)	Resin	
25	143-070-10	Pan Screw	2	M5x6	SWRM	
26	030-153-15	Seal Stopper	1	H-20(A)	SPCC	
27	122-072-17	O-Ring	1	P-140(139.6xd5.7)	NBR	*
28	046-107-13	Air Release Valve	1	PT-1/2	Nylon	
29	035-112-17	Oil Plug	1	M8x12	SUS304	
30	121-248-13	Packing	1	d8.2xd13.5x2t	PE	*
31	020-610-14	Pump Casing	1	8-BEH2	FC	
32	026-107-11	Oil Seal	1	TC-32488	NBR	
33	040-104-25	Impeller Shim		d18.2xd29x0.3t	SUS304	
34	021-733-17	Impeller (60Hz)	1	50C2.75-CR-63	FC	

PARTS LIST		SEWER & WASTEWATER PUMP				9/6/2017
ITEM	PART No.	DESCRIPTION	QTY	SIZE	MATERIAL	NOTES
	021-732-16	Impeller (50Hz) OPTION	1	50C2.75-CR-53	FC	50Hz OPTION
35	142-165-10	Spring Washer	1	M12	SUS304	
36	141-118-15	Hex.Cap Nut	1	M12(H=15.5)	SUS304	
37	120-145-16	Packing (S.Cover)		d112xd129x0.3t	PE	
38	022B5118	Suction Cover	1	8-CE2	HiCrFC	
39	140-475-10	Hex.Bolt (w/Spring Washer)	3	M8x16	SUS304	
40	023-001-25	Strainer Stand	1	No.1(8-BE2/CE2)	FC	
41	140-476-11	Hex.Bolt (w/Spring Washer)	3	M8x25	SUS304	
42	048-136-17	Screwed Flange	1	NPT-2(P.C.140)	FC	
43	140-099-16	Hex.Bolt	2	M12x40	SUS304	
44	121-137-18	Packing	1	MBT(P.C.140)	NBR	*
45	037-117-18	Discharge Bend	1	50mm(122-16)	FC	
46	140-078-19	Hex.Bolt	4	M10x35	SUS304	
47	121-142-16	Packing	1	90mm2(P.C.98)	NBR	*
	173-336-10	Packing O-Ring Set	1Set	(Marked by *)		
27	122-072-17	O-Ring (M.Frame/P.Casing)	1	P-140(139.6xd5.7)	NBR	*
30	121-248-13	Packing (Oil Plug)	1	d8.2xd13.5x2t	PE	*
44	121-137-18	Packing (Screwed Flange)	1	MBT(P.C.140)	NBR	*
47	121-142-16	Packing (Discharge Bend)	1	90mm2(P.C.98)	NBR	*
		Lubricant		Turbine Oil VG32 420ml		

PARTS LIST		SEWER & WASTEWATER PUMP				9/6/2017
ITEM	PART No.	DESCRIPTION	QTY	SIZE	MATERIAL	NOTES

EXPLODED VIEW

50C2.75-CR-63



C-00759-2