



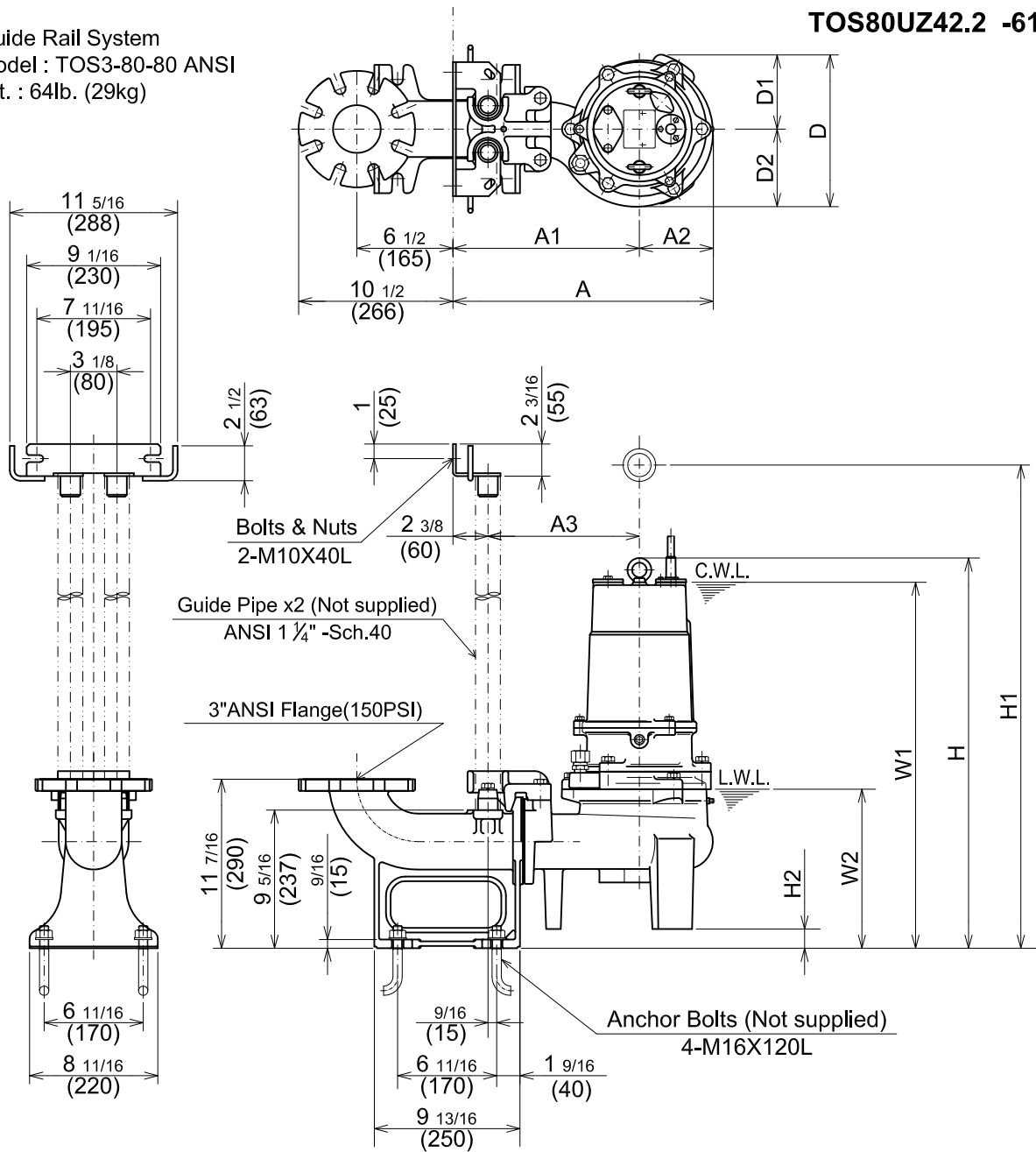
TSURUMI PUMP

UZ-SERIES
VORTEX - SEWAGE & WASTEWATER PUMPS

DIMENSIONS

TOS80UZ41.5 -61
TOS80UZ42.2 -61

Guide Rail System
Model : TOS3-80-80 ANSI
Wt. : 64lb. (29kg)



C.W.L. :Continuous running Water Level
L.W.L. :Lowest running Water Level

DIMENSIONS:USCS(Inch)

Model	HP	NOM. SIZE	Pump & Motor										C.W.L.	L.W.L.	*Wt. (lbs.)
			A	A1	A2	A3	D	D1	D2	H	H1	H2			
TOS80UZ41.5 -61	2	3"	17 5/8	12 5/8	5	10 1/4	10 1/4	5 1/16	5 1/4	26 3/8	31 1/8	1 5/16	24 3/4	10 7/8	123
TOS80UZ42.2 -61	3	3"	17 5/8	12 5/8	5	10 1/4	10 1/4	5 1/16	5 1/4	26 3/8	31 1/8	1 5/16	24 3/4	10 7/8	126

DIMENSIONS:METRIC(mm)

Model	kW	NOM. SIZE	Pump & Motor										C.W.L.	L.W.L.	*Wt. (kg)
			A	A1	A2	A3	D	D1	D2	H	H1	H2			
TOS80UZ41.5 -61	1.5	80	447	320	127	260	261	128	133	670	791	33	630	275	56
TOS80UZ42.2 -61	2.2	80	447	320	127	260	261	128	133	670	791	33	630	275	57

*Excluding TOS & Cable.