

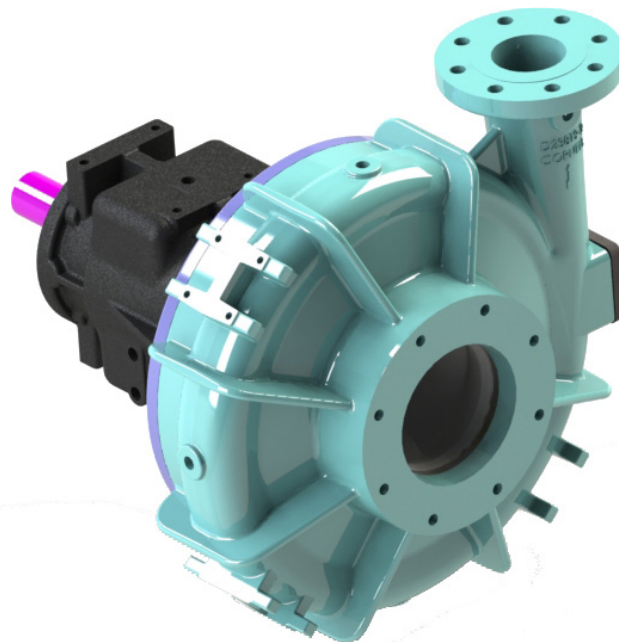
4NHTB19



***NOW STOCKED IN CD4MCu**

AVAILABLE MOUNTING CONFIGURATIONS
4NHTB19-RP-F Redi-Prime® Frame Mount
4NHTB19-RP-EM Redi-Prime® Engine Mount
4NHTB19-F Frame Mount
4NHTB19-EM Engine Mount
4NHTB19-VF Vertical Frame Mount

OPERATING LEVELS		
MIN FLOW	350 GPM	113.5 m³/h
MAX FLOW	2400 GPM	545 m³/h
DISCHARGE SIZE	4"	102 mm
SUCTION SIZE	8"	203 mm
SOLIDS HANDLING	2"	5 mm
MAX SPEED	2100 RPM	2100 RPM
SHUT-OFF HEAD	650'	198 m
BEP HEAD	495'	151 m
BEP FLOW	1920 GPM	436 m³/h
BEP PERCENT	70%	70%



A typical picture of the pump is shown. Please contact Cornell Pump Company for further details. All information is approximate and for general guidance only.

PARTS	STANDARD MATERIAL (ALL IRON)	CD4MCU
WEAR RING	CAST IRON	2205 DUPLEX SS
IMPELLER	DUCTILE IRON	CD4MCu
VOLUTE	DUCTILE IRON	CD4MCu
SHAFT	17-4 STAINLESS STEEL	17-4 STAINLESS STEEL
SHAFT SLEEVE	STEEL 416 SS PLATED	316 STAINLESS PLATED
MECHANICAL SEAL	TUNGSTEN CARBIDE VS. SILICON CARBIDE	TUNGSTEN CARBIDE VS. SILICON CARBIDE
BEARING HOUSING	CAST IRON	CAST IRON
O-RINGS	BUNA-N	VITON
BACK PLATE	DUCTILE IRON	CD4MCu

The 4NHTB19 pump is designed with Cornell's renowned quality and durability. It features a 4" discharge, 8" suction, and enclosed impeller. Available in All Iron or CD4MCu materials. Cornell's patented Cycloseal® design is standard, with a Type 2 single mechanical seal with Viton elastomers, stainless steel hardware and tungsten carbide vs. silicon carbide seal faces for abrasion resistance.

- Excellent NPSHr
- Industry-leading efficiencies
- Variable speed
- Patented Cycloseal® design
- Heavy-duty construction
- RunDry™ option (Indefinite run dry capability)
- Redi-Prime® available for fully-automatic continuous priming



AGRICULTURE



FOOD



INDUSTRIAL



MINING



MUNICIPAL



OIL & GAS



REFRIGERATION



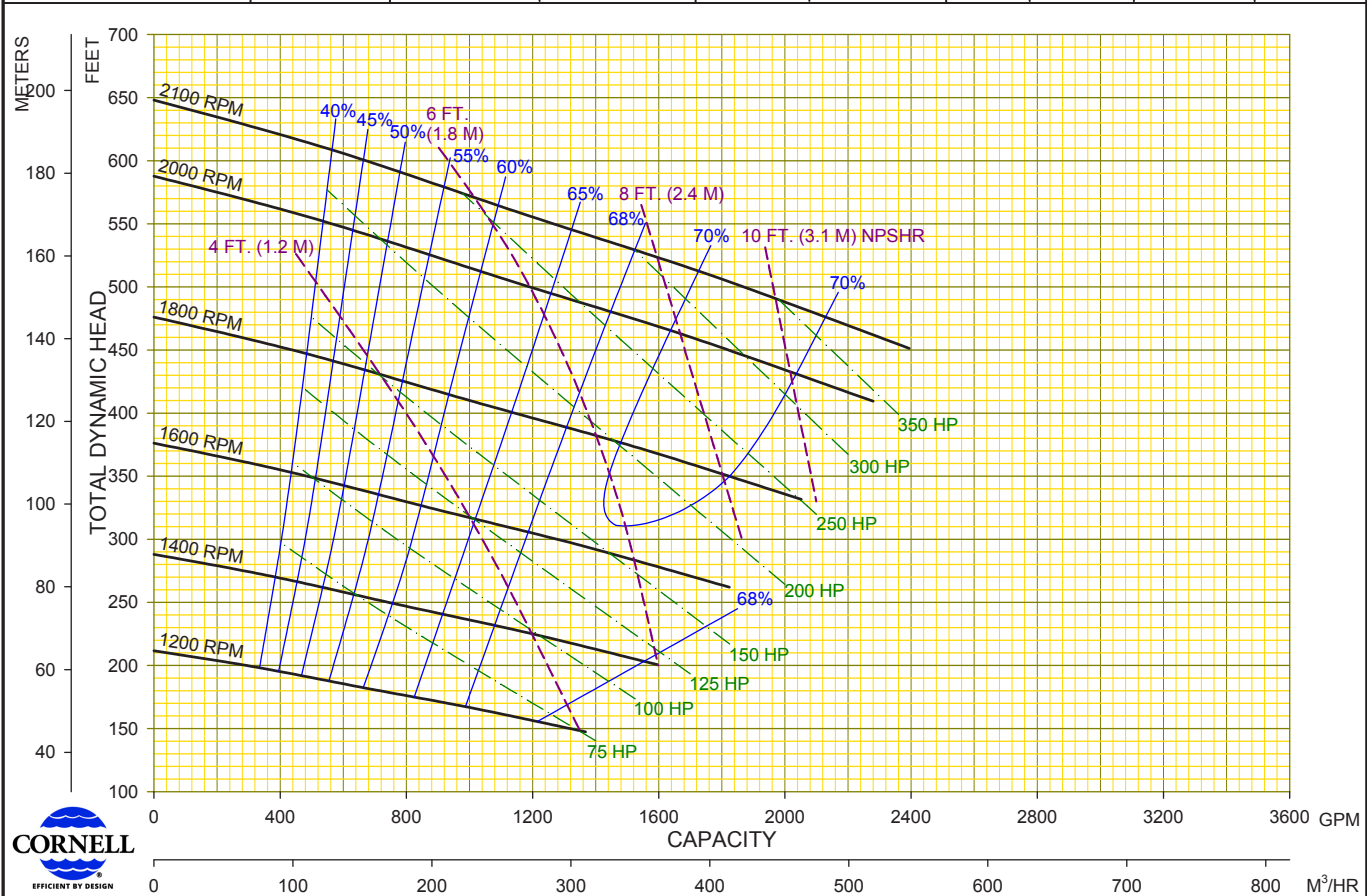
RENTAL

4NHTB19



Performances shown are for S.G. 1.0
60°F water, close-coupled configuration.
Other mounting styles or S.G.
may require curve adjustments.

Speed	Impeller Dia.	Style	Volute	Solids Dia.	N _s	Suction	Discharge	No. Vanes
VARIOUS	19.5"	ENCLOSED	SINGLE	2"	875	8"	4"	2



Cornell Pump Company • Clackamas, Oregon	01	02/24/15	CTG	MODEL : 4NHTB19 TYPE : SOLIDS HANDLING	CURVE NO: 4NHTB19VA
	00	12/09/14	CTG		