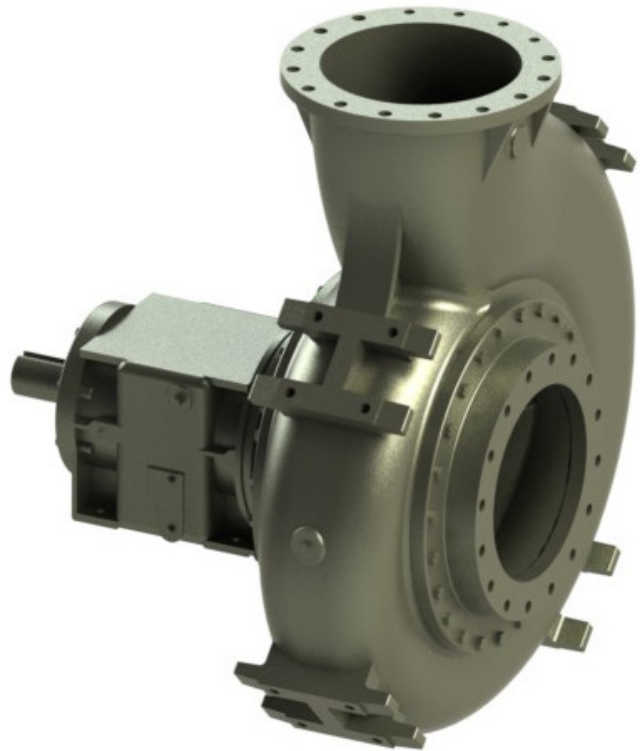


# 18NHG



AVAILABLE MOUNTING CONFIGURATIONS	
18NHG-F FRAME MOUNT	
18NHG-VF VERTICAL FRAME MOUNT	
18NHG-VC VERTICAL COUPLED	

OPERATING LEVELS		
MIN FLOW	3000 GPM	681 m <sup>3</sup> /h
MAX FLOW	18000 GPM	4086 m <sup>3</sup> /h
DISCHARGE SIZE	18"	457 mm
SUCTION SIZE	18"	457 mm
SOLIDS HANDLING	5"	127 mm
MAX SPEED	705 RPM	705 RPM
SHUT-OFF HEAD	137'	42 m
BEP HEAD	91.5'	28 m
BEP FLOW	12676 GPM	2877 m <sup>3</sup> /h
BEP PERCENT	86%	86%



A typical picture of the pump is shown. Please contact Cornell Pump Company for further details. All information is approximate and for general guidance only.

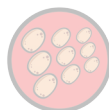
PARTS	STANDARD MATERIAL (ALL IRON)
WEAR RING	CAST IRON
IMPELLER	DUCTILE IRON
VOLUTE	DUCTILE IRON
SHAFT	41040/42 BD
SHAFT SLEEVE	416 SS
SUCTION COVER	DUCTILE IRON
MECHANICAL SEAL	TYPE 2 TUNGSTEN CARBIDE VS. SILICON CARBIDE SEAL
BEARING FRAME	CAST IRON

The 18NHG pump is designed with Cornell's renowned quality and durability. It features an 18" discharge, 18" suction, and enclosed impeller. Cornell's patented Cycloseal® design is standard, with a Type 2 single mechanical seal with Buna-N elastomers, stainless steel hardware and tungsten carbide vs. silicon carbide seal faces for abrasion resistance. It utilizes either an F12 or F20 bearing frame and heavy-duty, deep groove ball bearings.

- Handles solids up to 5"
- Heavy-duty bearing frame
- Long Bearing life
- Patented Cycloseal design
- Redi-Prime® available for fully-automatic continuous priming



AGRICULTURE



FOOD



INDUSTRIAL



MINING



MUNICIPAL



OIL & GAS



REFRIGERATION



RENTAL

# 18NHG

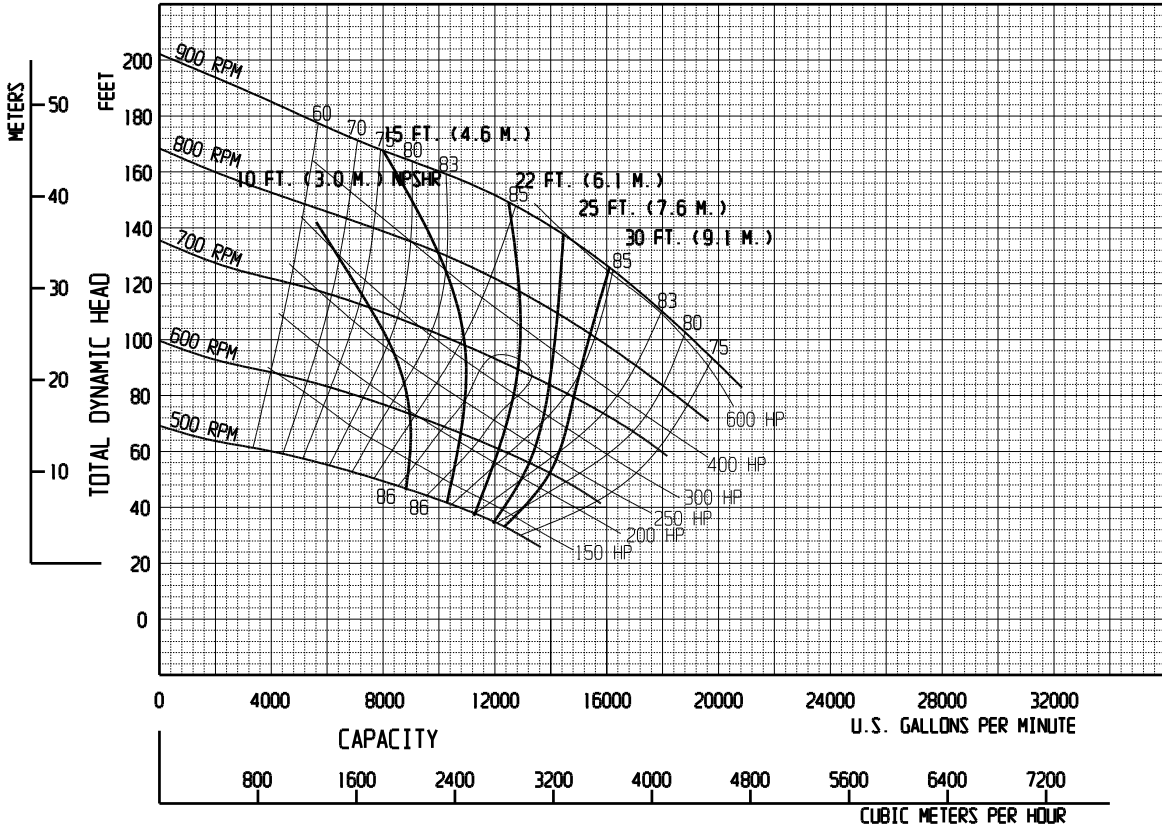


Speed	Impeller Dia.	Style	Solids Dia.	N <sub>S</sub>	Suction	Discharge	No. vanes
VARIOUS	28.00"	ENCLOSED	5.0"	2700	18"	18"	3

Feet x .305 = Meters  
 Inches x 25.4 = Millimeters  
 GPM x .227 = Cubic Meters/Hour  
 GPM x 3.785 = Liters/Minute  
 HP x .746 = KW

SINGLE VOLUTE

MOUNTING CONFIG.: F, VF, VC



Performances shown are for cool water, horizontal frame configuration with Cytosol. Other liquids may require horsepower and/or performance adjustments.

SUPPERCEDES SEPT 2003

SEPT 28 2017

18NHGVA

09/10/03



Cornell Pump Company • Portland, Oregon

18NHG - VARIOUS RPM